

Data sheet

Multiair FC 1100/1150/1200/1250/1300

Specially designed for the paper, packaging and plastic industry the flexible high pressure Kongskilde Multiair FC 1000 blower is an excellent choice for conveying of raw material, process waste and finished goods.

By utilizing the latest AC Drive technology in combination with Kongskildes high efficient well proven rotor design the new Multiair FC 1000 series adds unique flexibility to industrial pneumatic applications offering the users to optimize the application performance to avoid unnecessary power consumption.

The Multiair FC 1000 models are based on high efficient centrifugal blower, direct driven and build to an acoustic housing for state of the art noise reduction. The acoustic housing is designed for indoor as well as outdoor installation.

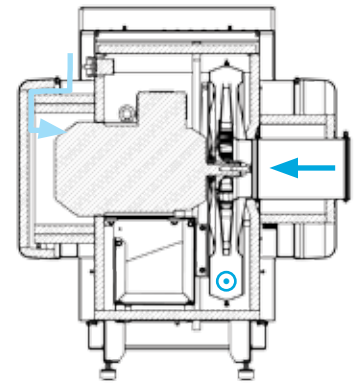
AC Drive technology enables the blower to run on demand up to 4800rpm directly coupled to the electric motor. With the unique controls and build in functions the operator can easily adjust the performance to the exact need of the application. Furthermore the blower is equipped with a PID control which enables the blower to maintain a constant flow or pressure in a given application by adding the optional Kongskilde flow control unit or pressure control unit.

The compact, simple and effective design have minimized the requirement for maintenance which basically only calls for cleaning.

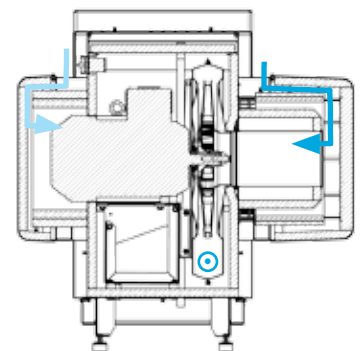
Kongskilde can deliver the Multiair FC 1000 series in 2 different versions depending on the application requirement. The T- model is a pressure blower where the application can be connected to the pressure side of the blower. For the S- model both the vacuum and pressure side can be connected to the application.



S-model



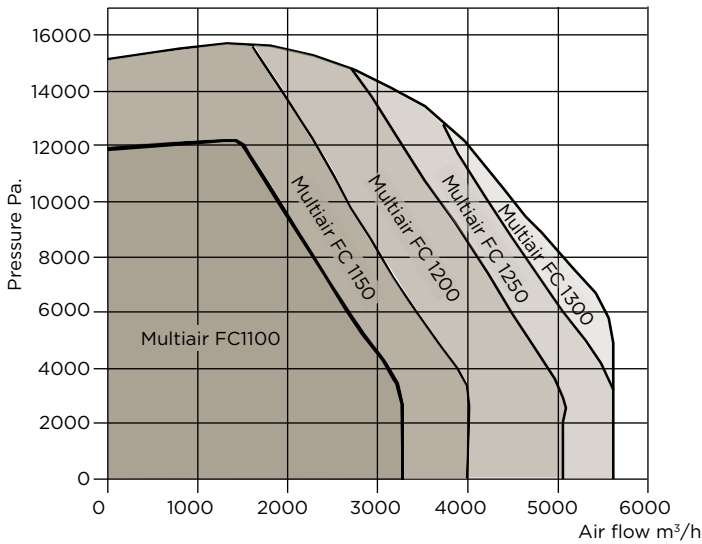
T-model



Technical data

Multiair type		1100	1150	1200	1250	1300
AC Drive output max. (kW)		7,5	11	15	18,5	22
Power supply		400 - 480 V, 50 or 60 Hz				
Min. fuse rating		20A	25A	35A	50A	50A
Air flow m ³ /h	m ³ /h	Pressure Pa				
	1800	10000	15800	15800	15800	15800
	2800	5000	9000	14000	14800	14800
	4000	-	-	8400	10800	12000
Weight, kg		279	330	330	339	339
Heating of air at 1800 m ³ /h in C°		10	14	20	20	20
Ambient temperature		-10°C to 40°C				
Multiair FC models		Blower performance is adjusted manual on panel. Optional air flow or pressure control can be used for control of blower performance				
Declaration		CE/UL/CUL				
Noise level		≈ 72-76 dB (A) (Application dependent)				

Performance for Multiair FC 1000 series

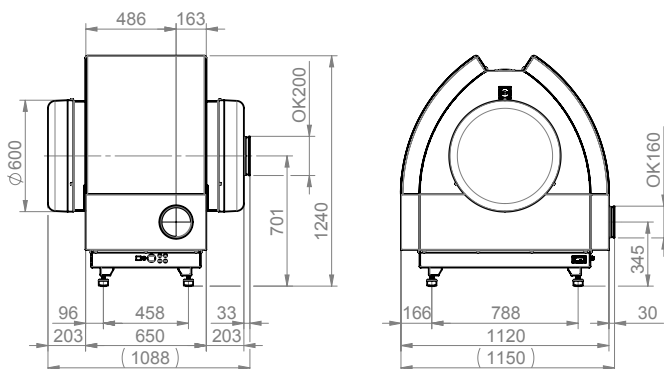


Optional equipment

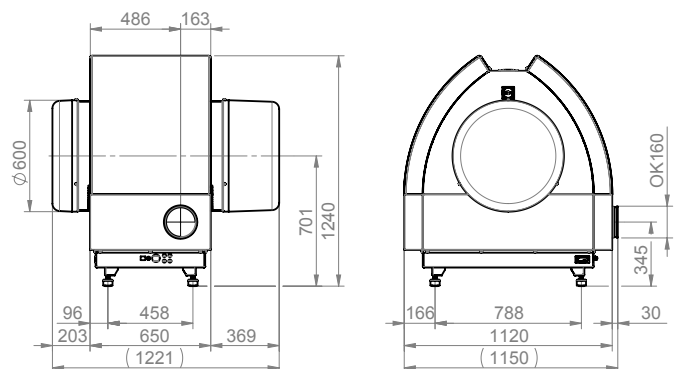
- To adjust the blower performance on distance up to 30m from the Multiair a remote unit is available. The remote unit has to be wired to the panel on the Multiair.
- Pressure control unit will enable the blower to hold a constant pressure independent of air flow.
- Air flow control unit will enable the blower to hold a constant air flow independent of the pressure.
- Heating element for use at ambient temperatures below -10°C

Dimensions

S-model



T-model



Kongskilde industries A/S

Tel. +45 33 68 37 00

mail@kongskilde.com

www.kongskilde.com

